

360 Neon Installation Manual – Cut, Solder, and Cap

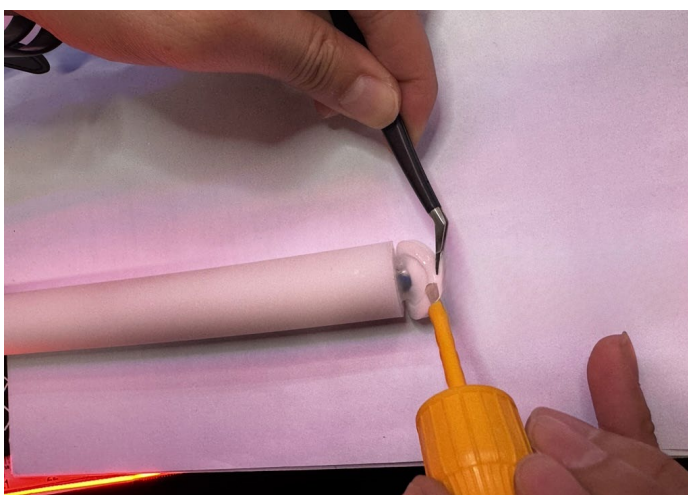
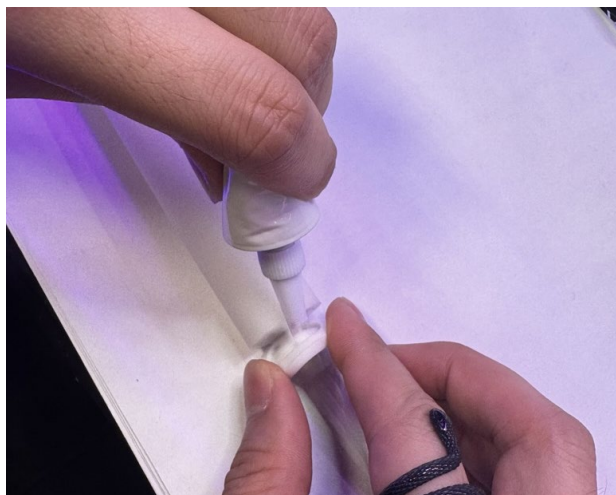
LN360-XXXXK, LN360-RGBXXK, LN360-RGBXXK-B: Installation Manual

Cut and Cap Instructions

1. For best results, use 360 neon shears (LN360-Shears) to cut the neon. Other pipe cutting tools can be used if needed. Cut approximately ½-inch (12mm) longer than the target length for monochrome or 1-inch (25mm) longer than the desired length for color-changing. Inspect the PCB and trim the overall length to the closest cut line to the target length. This will ensure all LEDs illuminate.

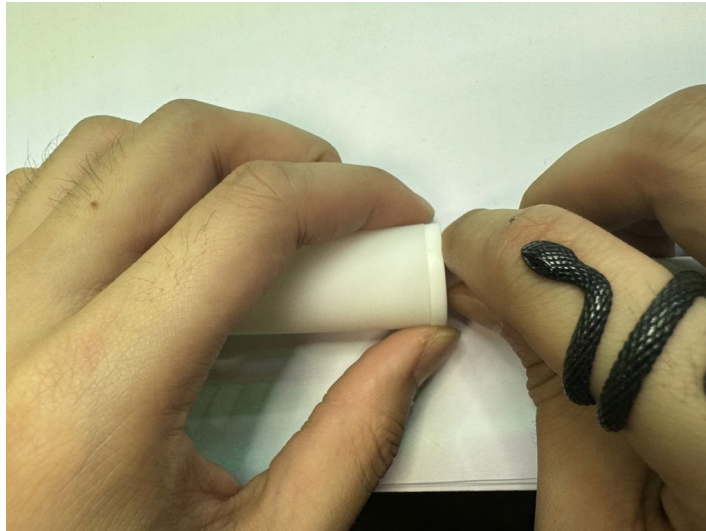


2. Fill the end cap (LN360-EC-W, LN360-EC-B) with silicone glue. Optional: Apply super glue to the perimeter of the end cap to speed up the bonding.



Eluxtra™ products are exclusively available for purchase through Environmental Lights and City Theatrical.

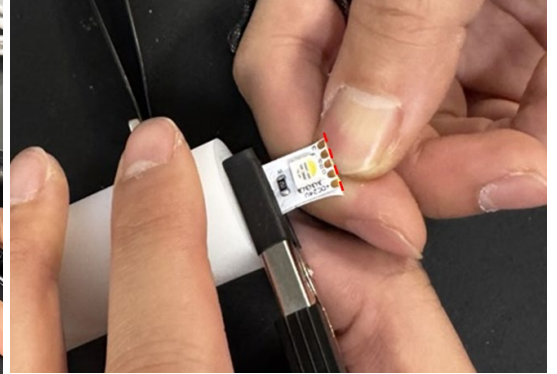
3. Press end cap onto neon and hold until it sticks in place.



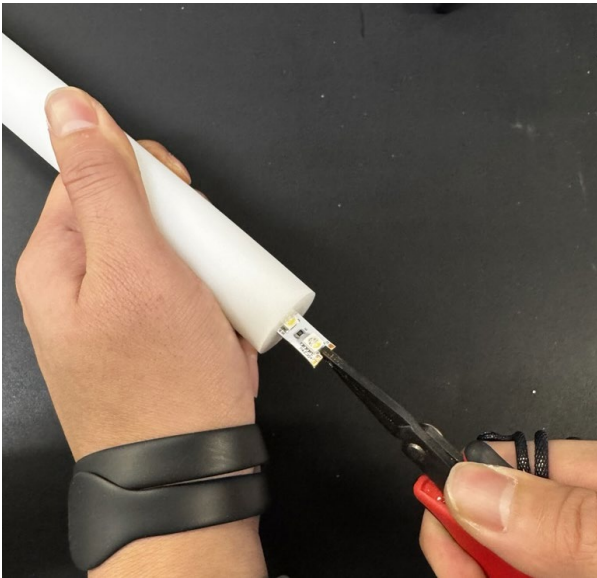
Eluxtra™ products are exclusively available for purchase through Environmental Lights and City Theatrical.

Cut and Solder Instructions

1. For best results, use 360 neon shears (LN360-Shears) to cut the neon. Other pipe cutting tools can be used if needed. Cut approximately ½-inch (12mm) longer than the target length for monochrome or 1-inch (25mm) longer than the desired length for color-changing. Inspect the PCB and trim the overall length to the closest cut line to the target length. This will ensure all LEDs illuminate.

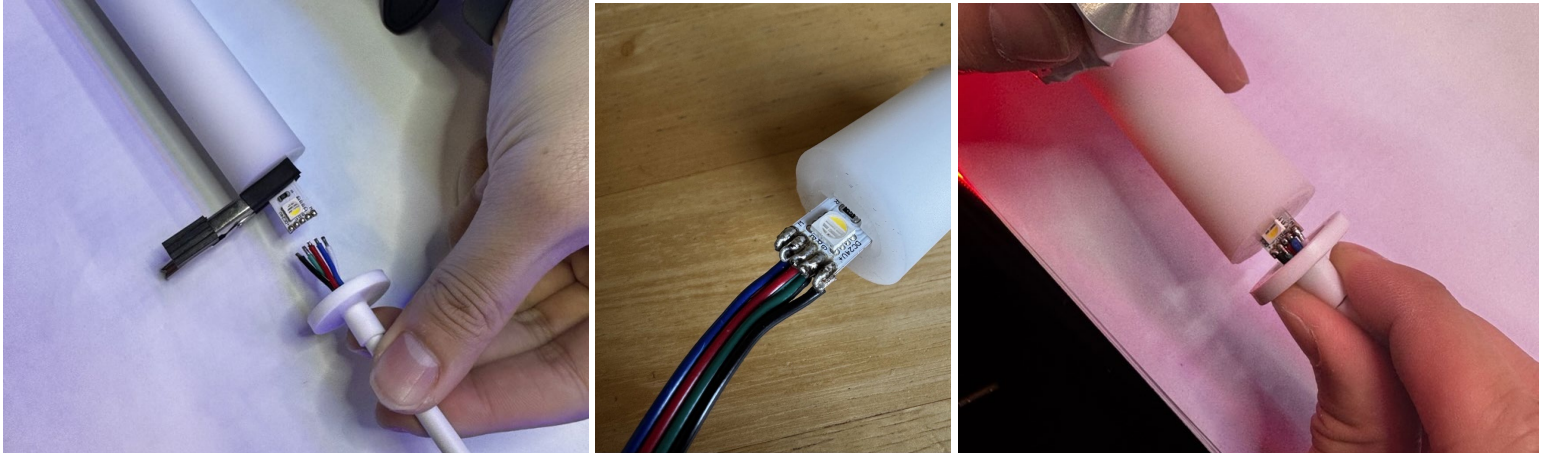


2. Use pliers to gently pull LED strips out of neon and clamp them in place.

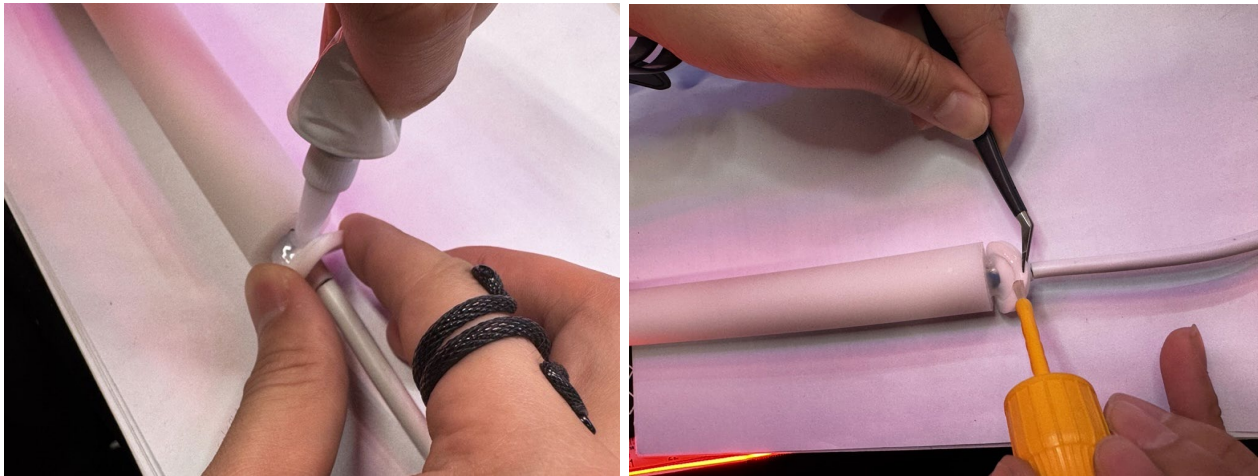


Eluxtra™ products are exclusively available for purchase through Environmental Lights and City Theatrical.

- Slide end cap (LN360-EC-H-W, LN360-EC-H-B) over input lead wire (2-20AWG-WJ-3m, 3-20AWG-WJ-3m, 5-20AWG-WJ-3m). Solder the leads onto one side of the strips and drag a solder bridge over to the matching pad on the other side. (For non-pixel neon, with $1\text{m} < \text{length} < 2.5\text{m}$, solder bridge is not required.) Remove the clamp to cover the PCB with the neon.



- Fill the end cap with silicone glue. Optional: Apply super glue to the perimeter of the end cap to speed up the bonding.



Eluxtra™ products are exclusively available for purchase through Environmental Lights and City Theatrical.

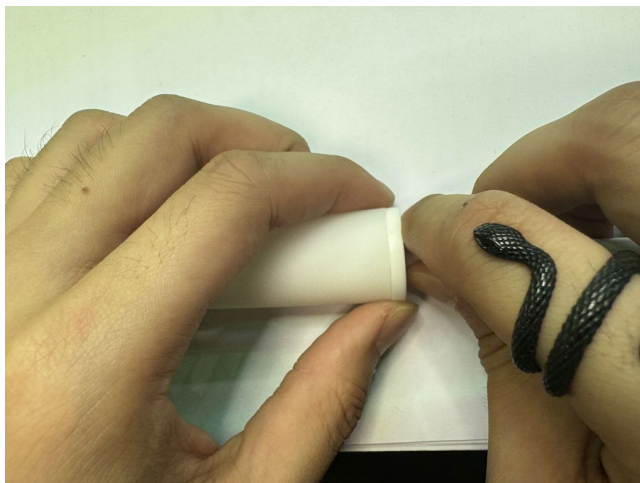
Environmental
Lights™

Environmental Lights
888-880-1880
contactus@environmentallights.com

**CITY
THEATRICAL**
NEW YORK • LONDON
An Environmental Lights Company

City Theatrical
US: 800-230-9497 / sales@citytheatrical.com
UK: +44 (0)20 8949 5051 / salesuk@citytheatrical.com

5. Press end cap onto neon and hold until it sticks in place.



Eluxtra™ products are exclusively available for purchase through Environmental Lights and City Theatrical.